



Bi-Sonic



DC 8030 new

SIZE:

75mm×75mm×30mm(2.95"×2.95"×1.18")

CONSTRUCTION:

Glass fiber reinforced plastic: Impeller and housing PBT are UL 94V-0 rating

DIELECTRIC STRENGTH:

5mA max. at 500VAC 60Hz one minute (between frame and terminal)

INSULATION RESISTANCE

10mega Ohm min.at 500 VDC (between frame and terminal)

OPERATING TEMPERATURE:

Ball bearing: -10°C to +75°C

FUNCTION(Optional):

Polarity Protection/Auto Restart/ FG or RD/PWM/IP68

WEIGHT:

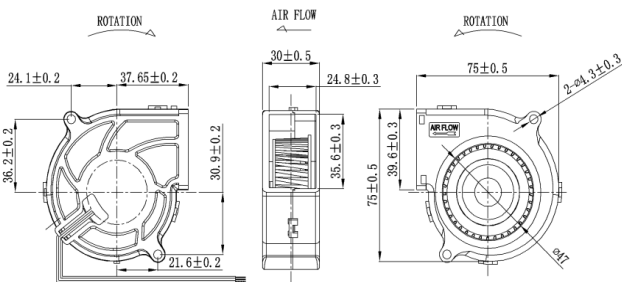
85 grams

Specifications:

MODEL NO.	BEARING	RATED	OPERATING	MAX.	MAX.	SPEED	MAX. AIR FLOW		MAX. AIR PRESSURE		NOISE
		VOLTAGE	VOLTAGE RANGE	CURRENT	INPUT POWER		m3/min	CFM	mmH2O	inH2O	
		VDC	V	A	W	R.P.M.					
BP803012M	Ball	12	7~13.8	0.10	1.20	2000	0.235	8.3	5.0	0.20	28.5
BP803012H	Ball	12	7~13.8	0.20	2.40	2600	0.305	10.8	9.9	0.39	35.2
BP803012HM	Ball	12	7~13.8	0.30	3.60	3400	0.425	15.0	17.4	0.69	41.9
BP803012HH	Ball	12	7~13.8	0.48	5.76	3800	0.456	16.1	19.7	0.78	44.5
BP803012HU	Ball	12	7~13.8	0.53	6.36	4200	0.498	17.6	22.5	0.89	47.2
BP803024H	Ball	24	10~27.6	0.12	2.88	2600	0.312	11.0	11.2	0.44	35.2
BP803024HL	Ball	24	10~27.6	0.20	4.80	3100	0.363	12.8	15.6	0.61	38.7
BP803024HM	Ball	24	10~27.6	0.17	4.08	3400	0.425	15.0	17.4	0.69	41.9
BP803024HH	Ball	24	10~27.6	0.20	4.80	3800	0.456	16.1	19.7	0.78	44.5

UL

Dimensions (mm)



Performance Curve

